

str.
31 August
1989

Oportunitatea unei schimbări



2020

Utilizare de facto a străzii



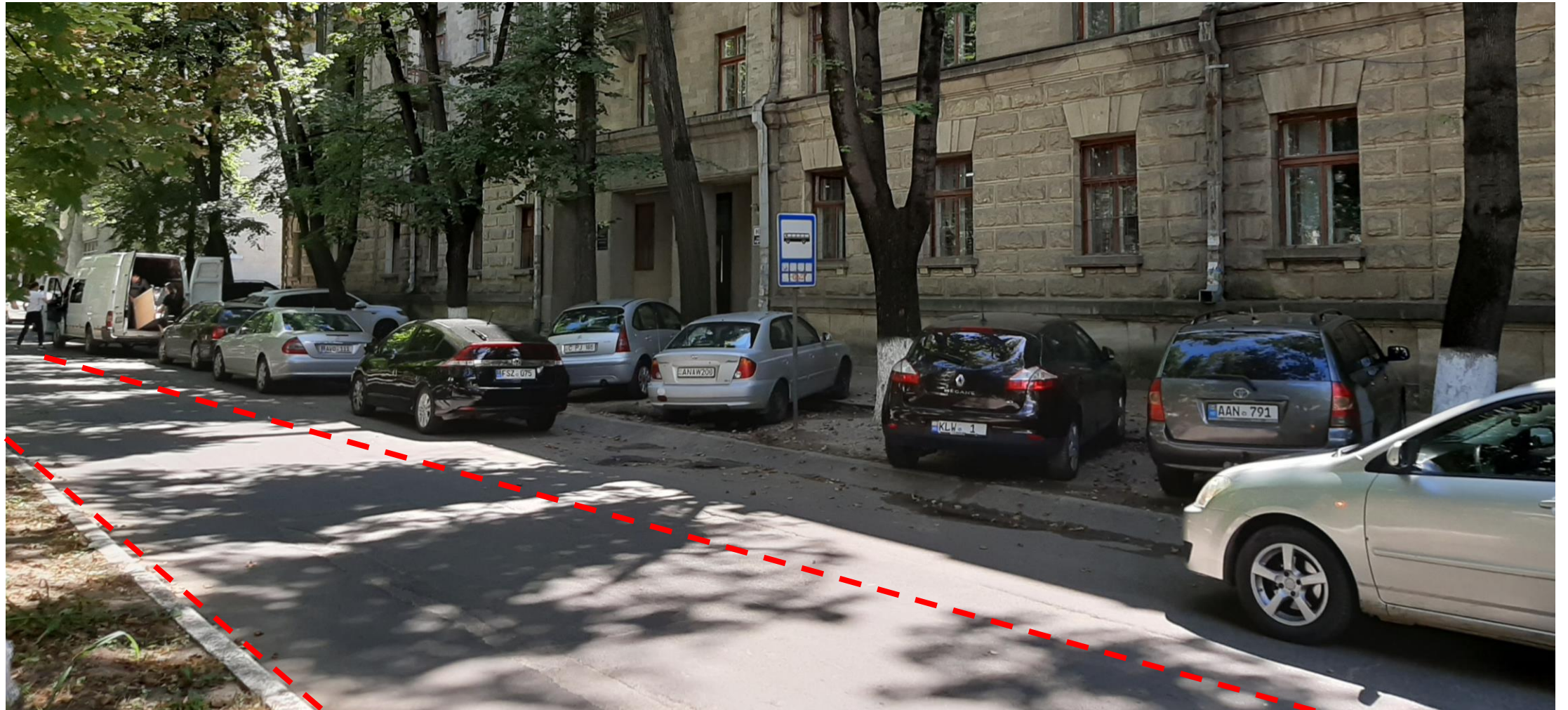
2020

Utilizare de facto a străzii



2020

Utilizare de facto a străzii



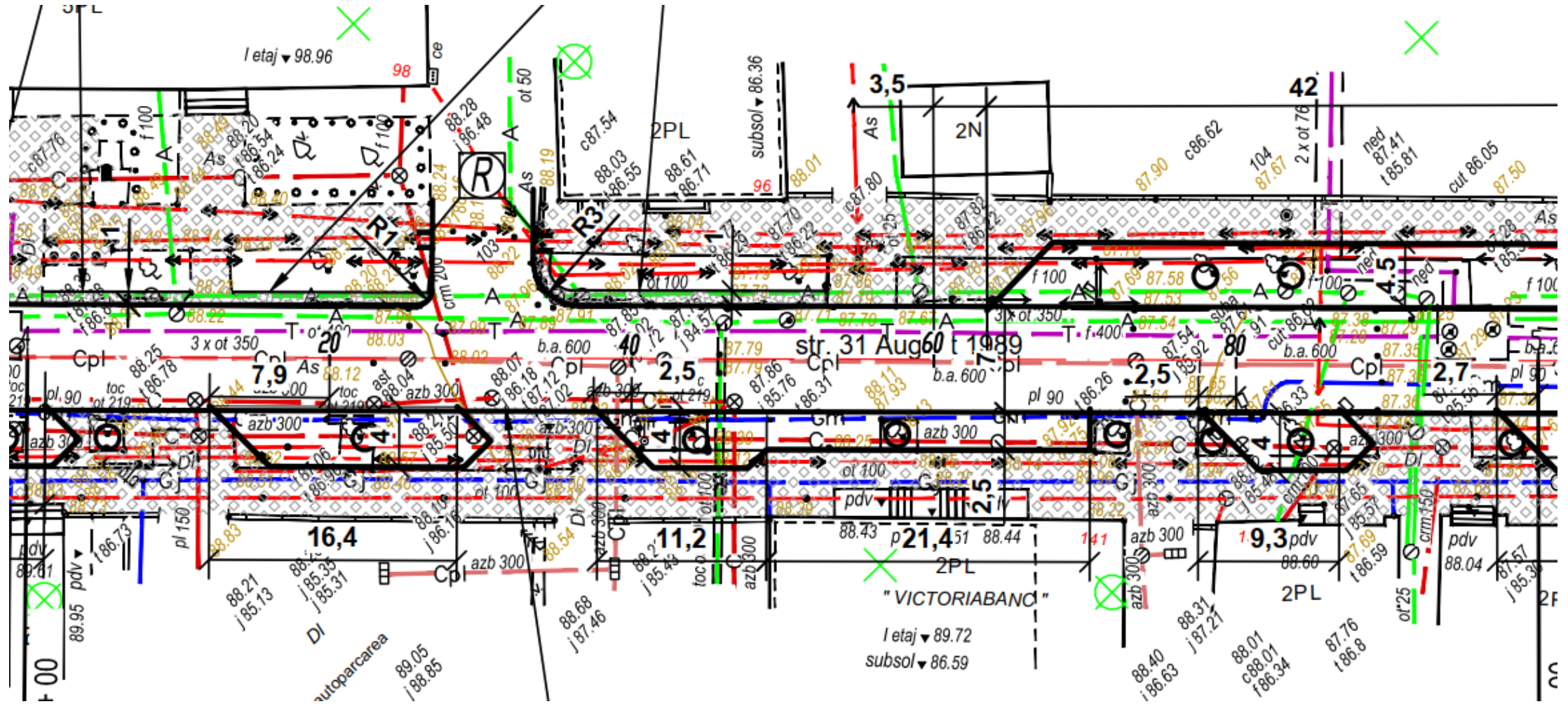
2020

Utilizare de facto a străzii

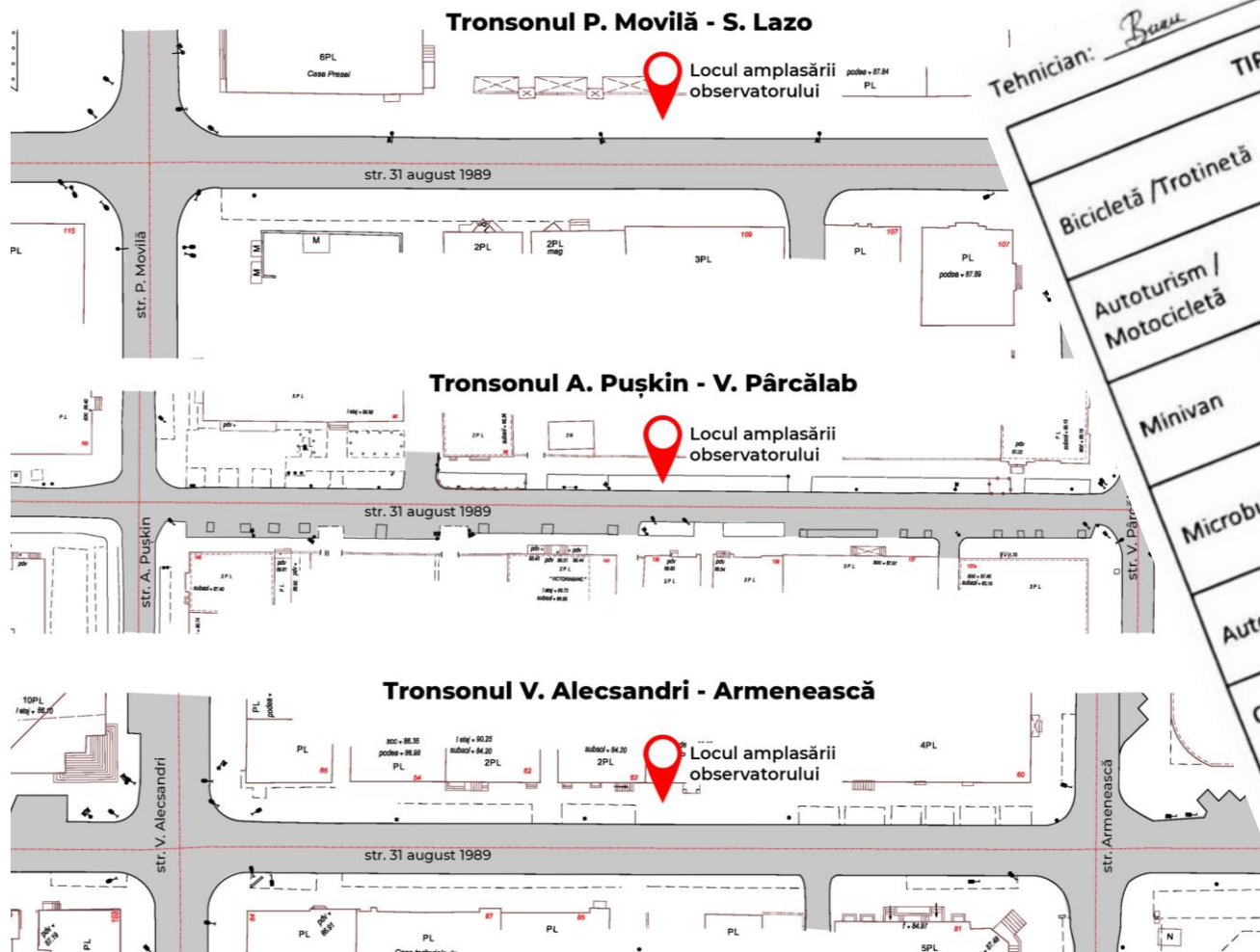


2013 proiectul unei reabilitări

autor: CHIȘINĂU PROIECT



str. 31 August 1989 situația la zi

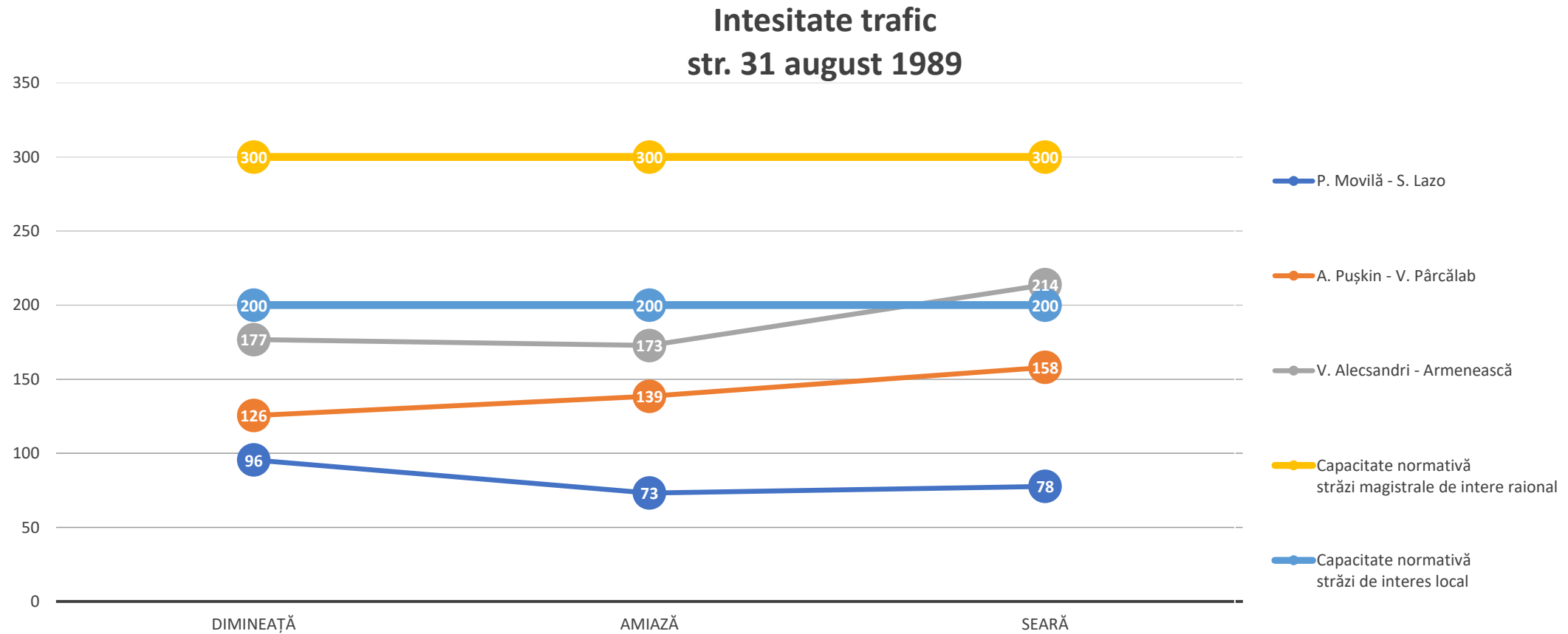


Tehnician: *Banu*

NUMĂR UNITĂȚI (se marchează cu punct, linie)

TIP TRANSPORT	NUMĂR UNITĂȚI
Bicicletă / Trotinetă	1
Autoturism / Motocicletă	11
Minivan	11
Microbus	11
Autobus	1
Camion cu capacitatea de până la 3.5t	1 - Autocamion
Camion cu capacitatea de 3,5-7.5t	
Camion cu capacitatea de 7.5-16t	
Tractor cu capacitatea de 20-24t	

str. 31 August 1989 poate deveni o stradă de interes local! situația la zi



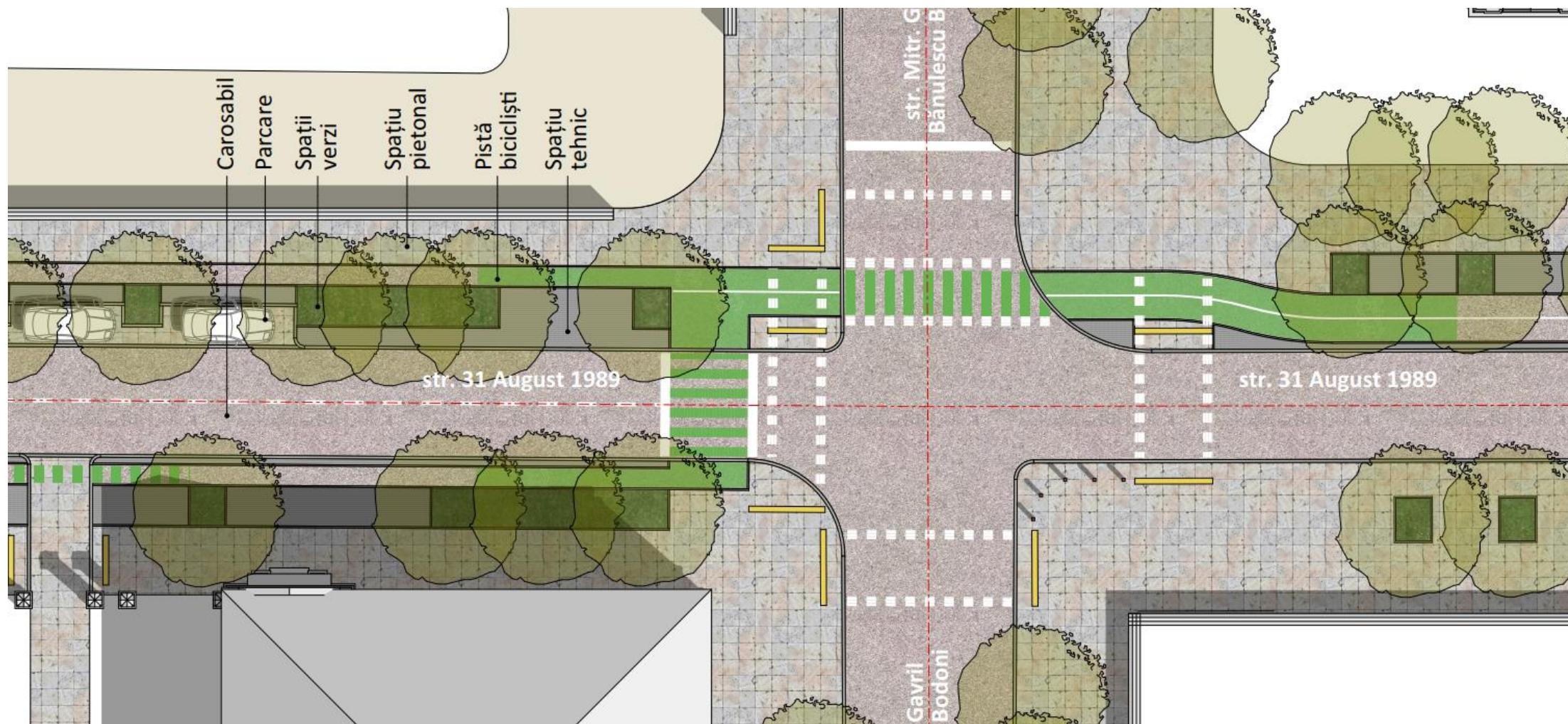
str. 31 August 1989 poate deveni
o stradă de interes local! Ce am obține?

- O stradă cu un trafic moderat și bine reglementat
- O stradă orientată spre pietoni și bicicliști
- O conexiune între Parcul Valea Trandafirilor și Parcul Dendrariu
- O stradă de tip Green Way
- O stradă ce respectă contextul istoric
- O stradă cu parcări organizate
- O infrastructură ce păstrează vegetația existentă

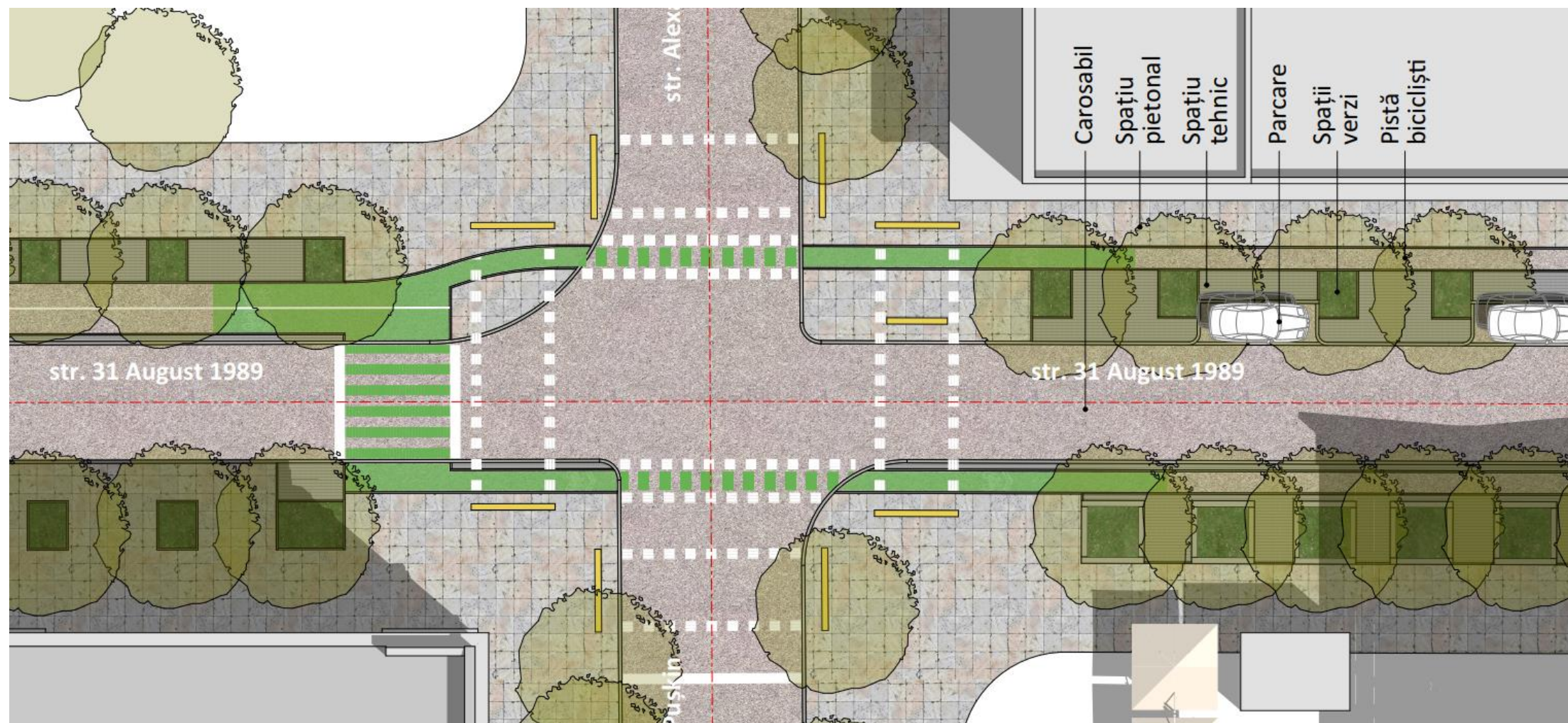
Fără a schimba schema circulației transportului...



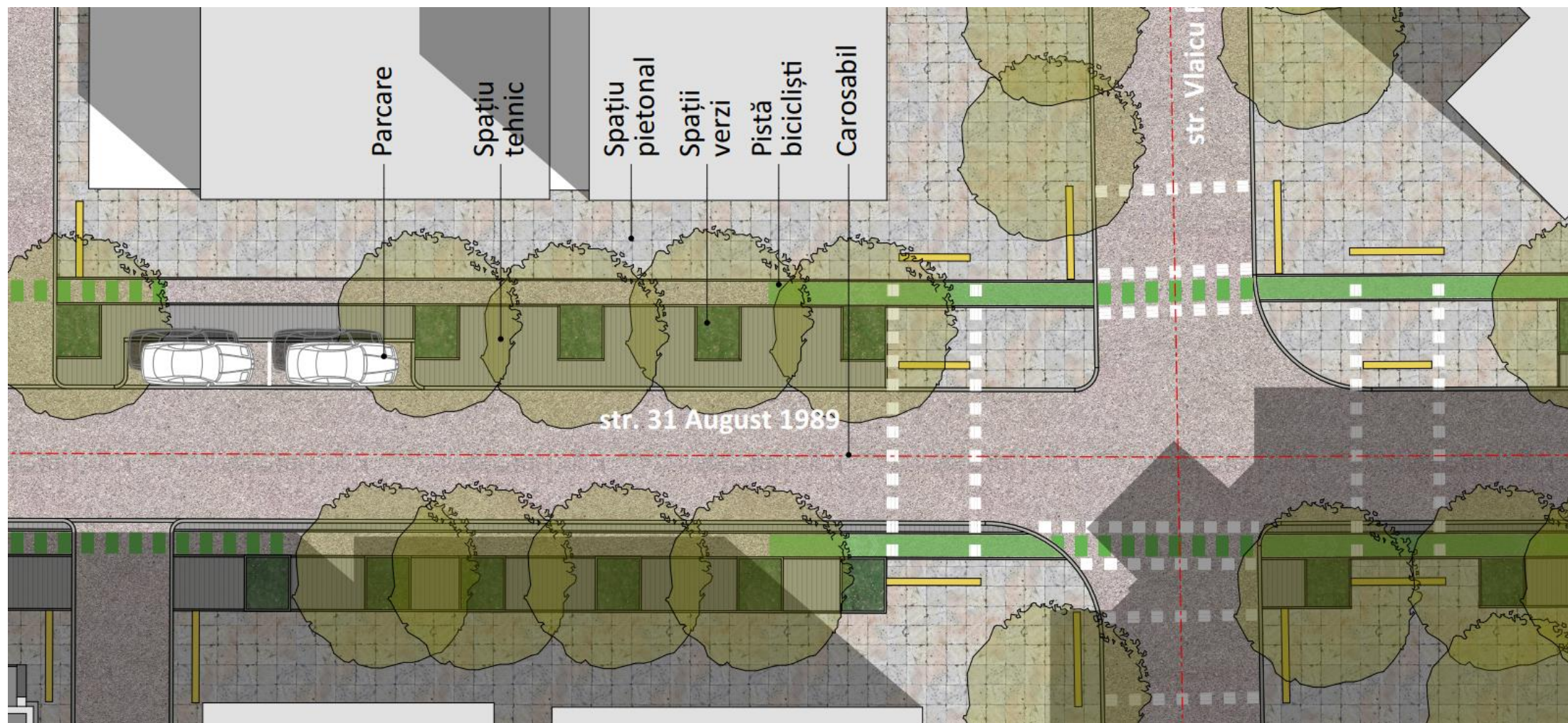
... am obține un alt tip de stradă



... am obține un alt tip de stradă

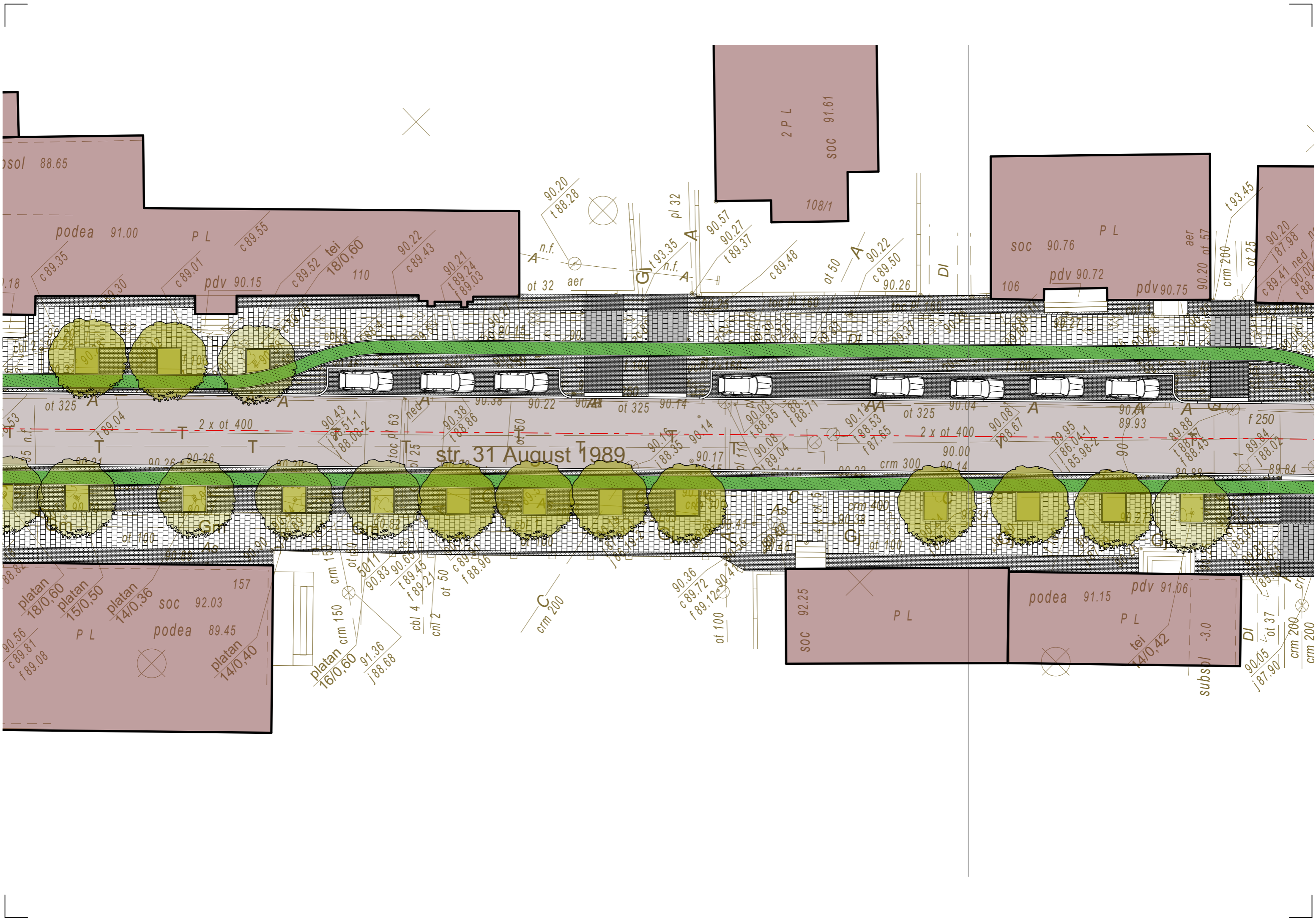


... am obține un alt tip de stradă









sol 88.65

podea 91.00 PL
 c 89.35
 c 89.55
 pdv 90.15
 c 89.01
 c 89.52 tei 18/0,60
 110
 90.22
 c 89.43
 90.21
 f 89.24
 f 89.03

2 PL
 SOC 91.61
 108/1

SOC 90.76 PL
 106
 pdv 90.72
 pdv 90.75
 aer 90.20 of 57
 crm 200
 ot 25

193.45
 90.20
 f 87.98
 c 89.41 ned
 90.00
 f 88.00

str. 31 August 1989

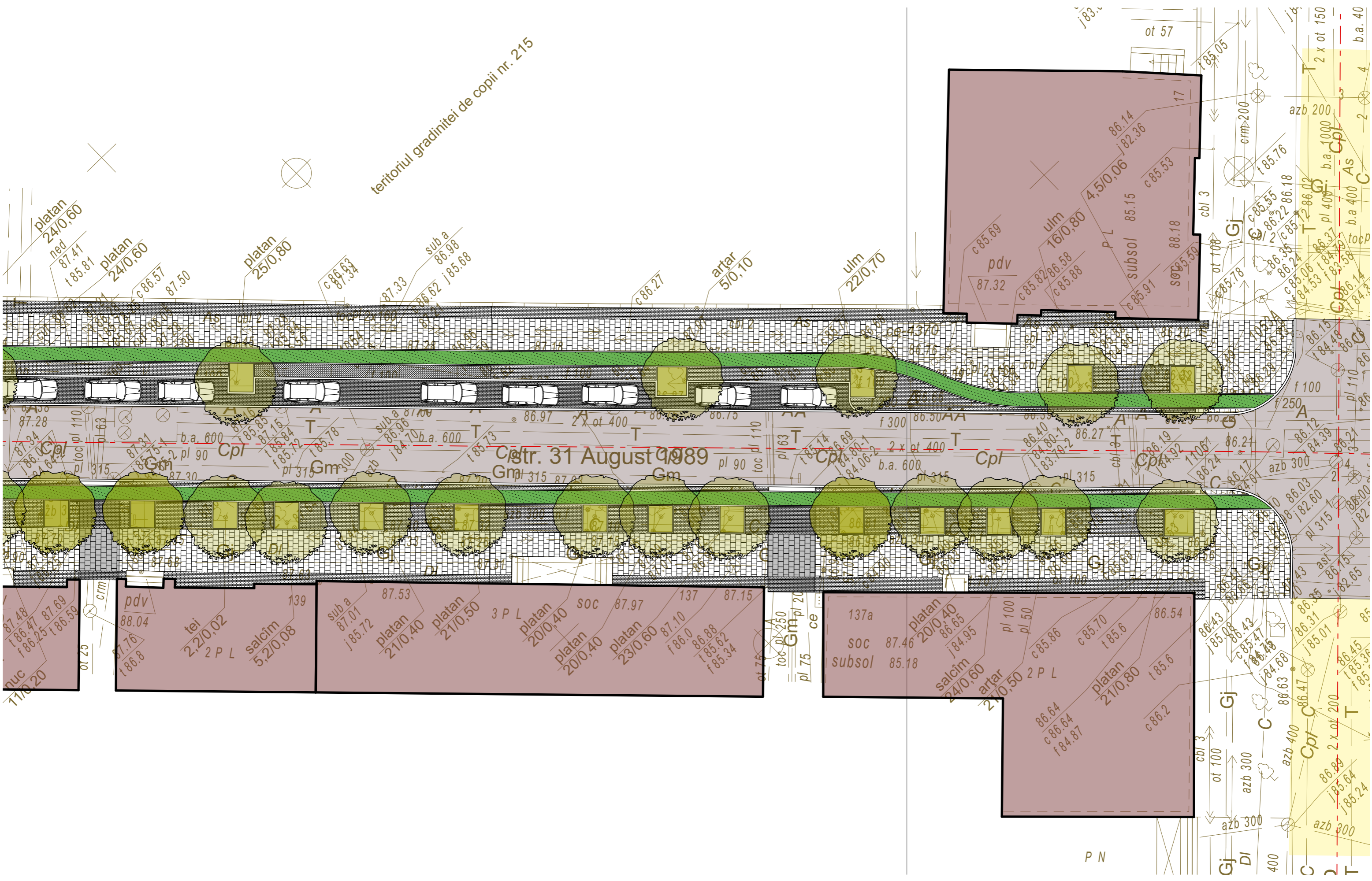
157
 platan 18/0,60
 platan 15/0,50
 platan 14/0,36
 SOC 92.03
 podea 89.45
 PL
 90.56
 c 89.81
 f 89.08

SOC 92.25 PL
 podea 91.15
 pdv 91.06
 PL
 tei 14/0,42
 subsol -3.0

platan crm 150
 16/0,60
 91.36
 f 88.68
 ot 50
 50/11
 90.83
 f 89.45
 f 89.21
 cbl 4
 crm 2
 ot 50
 c 89.45
 f 88.96

DI
 90.05
 ot 37
 crm 200
 crm 200

teritoriul gradinitei de copii nr. 215



platan
24/0,60
ned
87.41
t 85.81

platan
25/0,80

sub a
86.98
j 85.68

artar
5/0,10

ulm
22/0,70

Cstr. 31 August 1989

11/0,20
nuc
87.48
f 86.47
t 86.59

ot 20
cm

pdv
88.04

tei
2,2/0,02

salcîm
5,2/0,08

sub a
87.01
j 85.72

platan
21/0,40

platan
21/0,50

3 P L

platan
20/0,40

platan
23/0,60

87.10

f 86.0

86.88

139

87.15

137a

SOC 87.46

platan
20/0,40

86.65

subsol 85.18

salcîm
24/0,60

artar
2/0,50

2 P L

platan
21/0,80

86.54

86.64

c 86.64

f 84.87

85.6

85.6

86.2

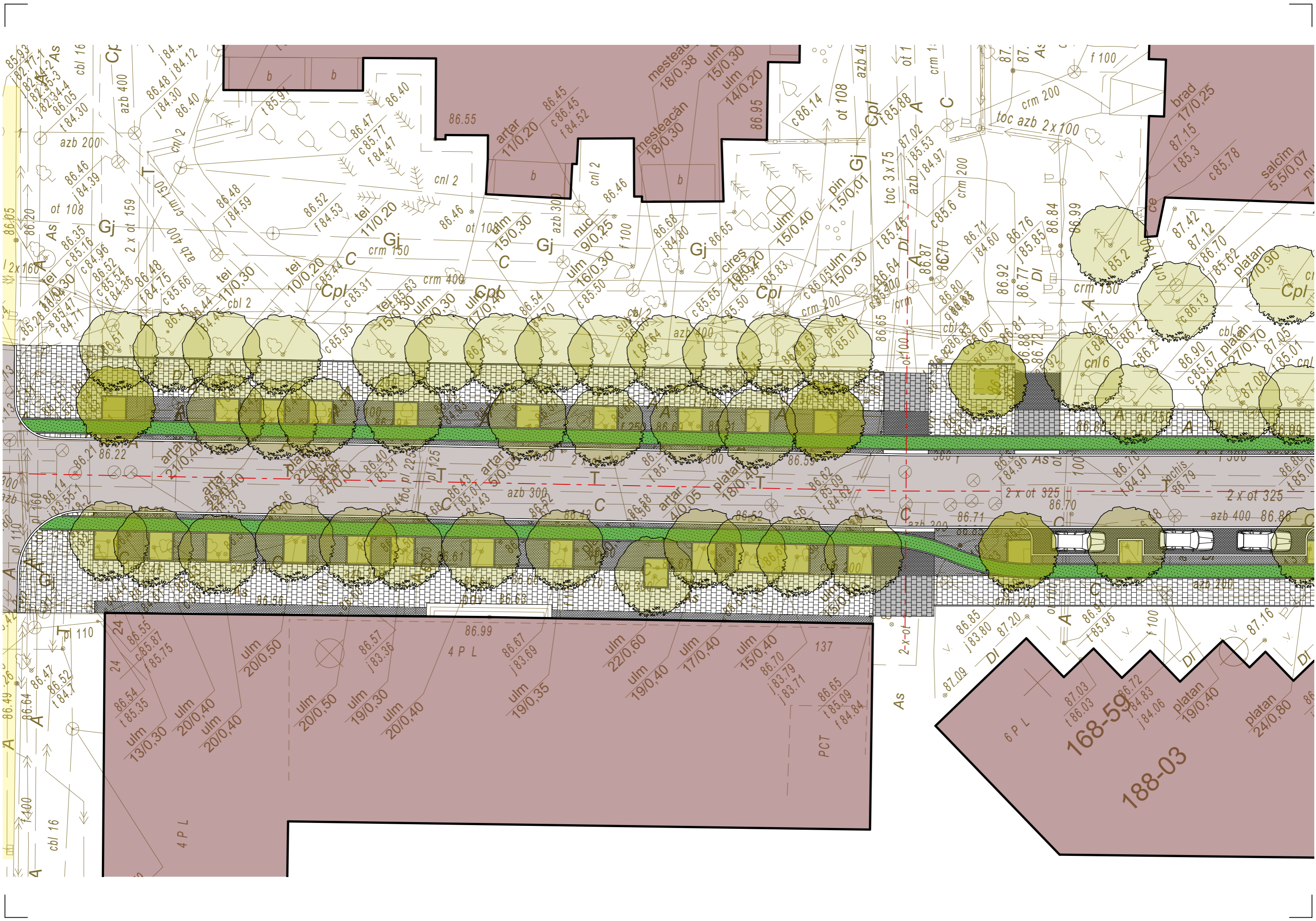
P N

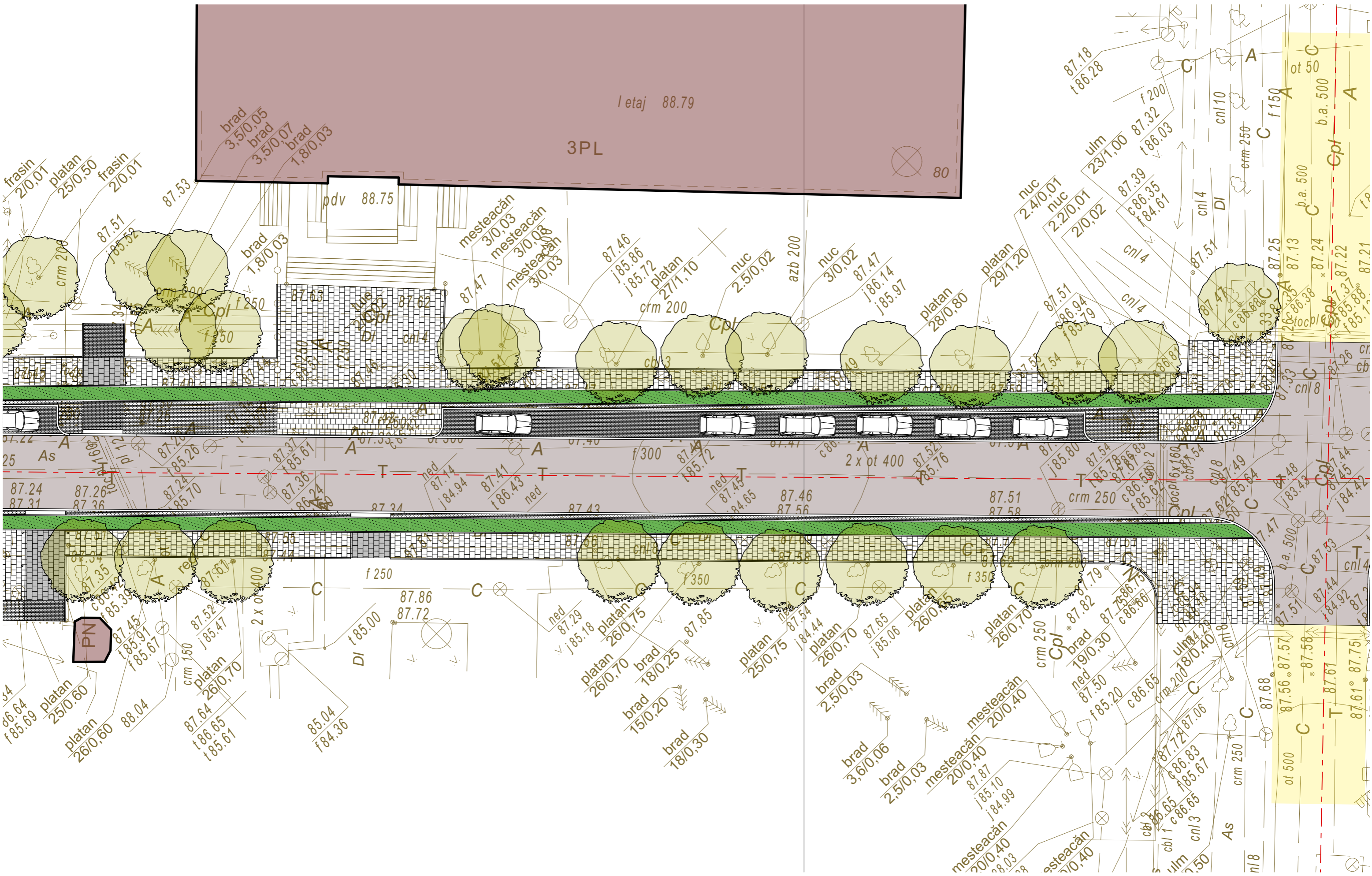
Gj

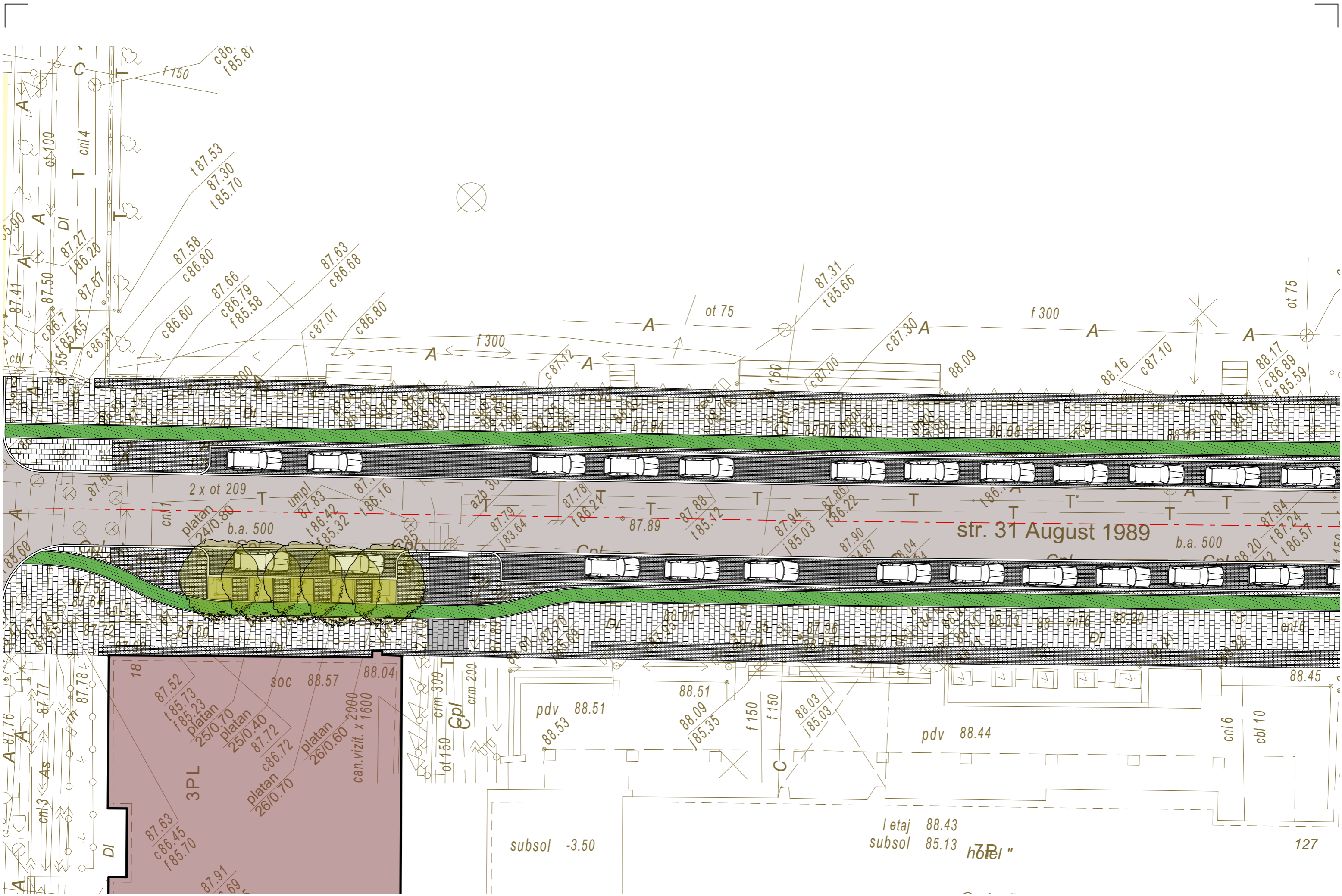
DI

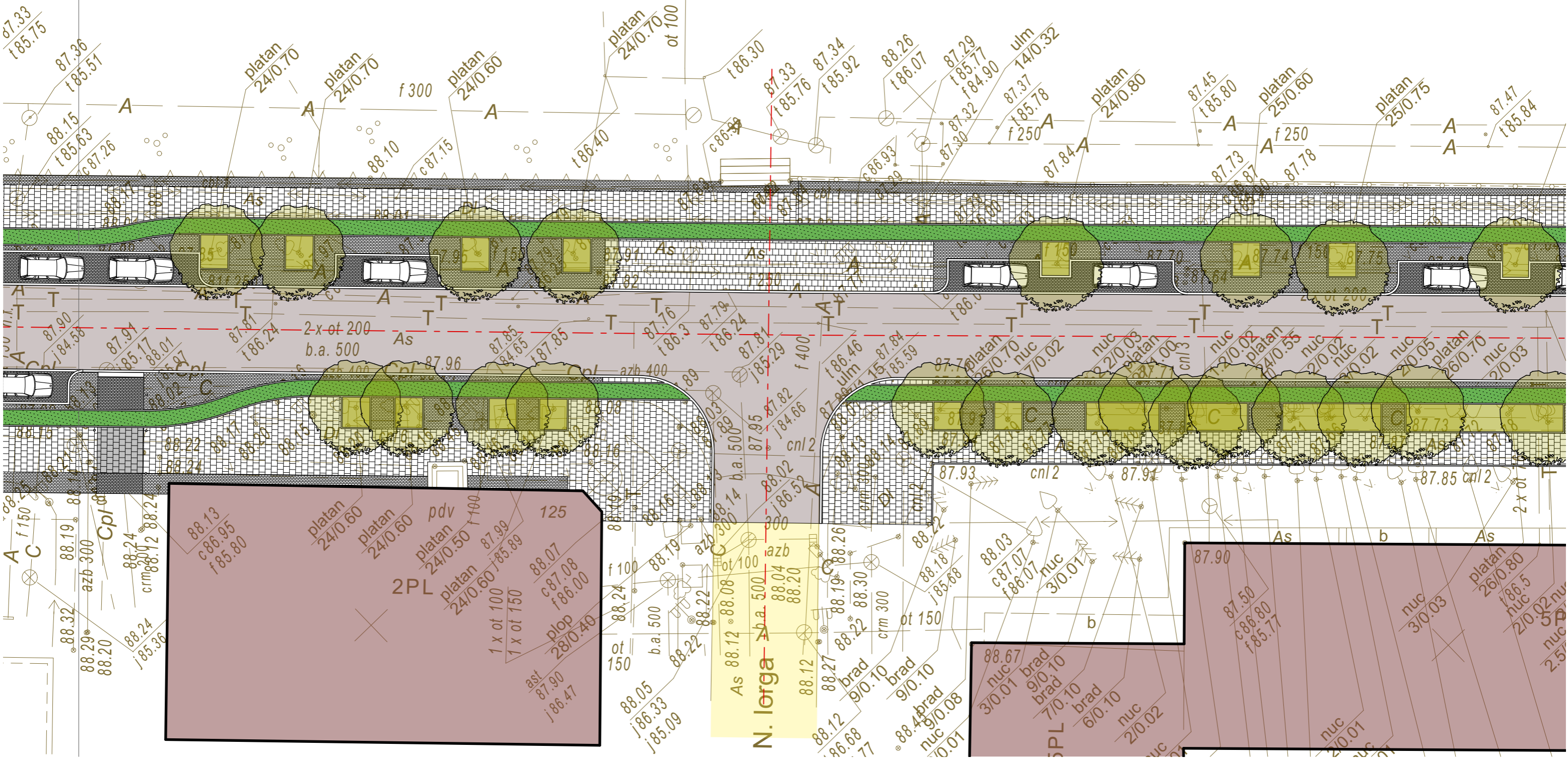
C

T









88.13
c86.95
f85.80

platan 24/0.60

platan 24/0.60

pdv
platan 24/0.50

125

2PL

platan 24/0.60

1 x ot 100

1 x ot 150

88.07

c87.08

f86.00

plop 28/0.40

ast
87.90

f86.47

As 88.12

88.08

ot 100

N. Iorga

azb

88.04

88.20

88.12

88.21

88.19

88.26

88.22

88.30

ot 150

crm 300

brad 9/0.10

brad 9/0.10

88.4

brad 9/0.08

nuc 10/0.01

88.67

nuc 3/0.01

brad 9/0.10

brad 7/0.10

brad 6/0.10

nuc 2/0.02

87.90

87.50

c86.80

f85.77

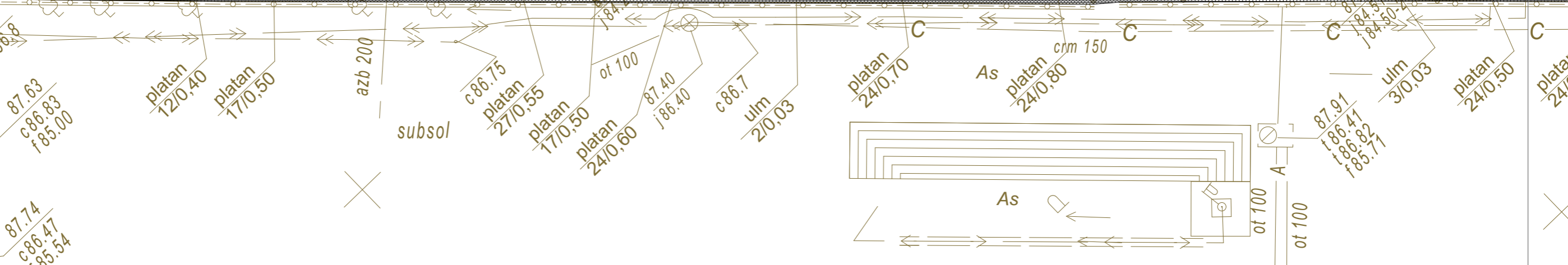
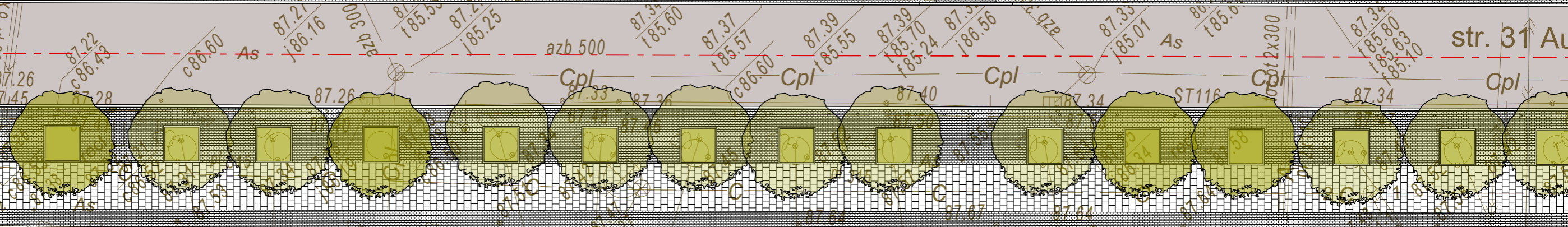
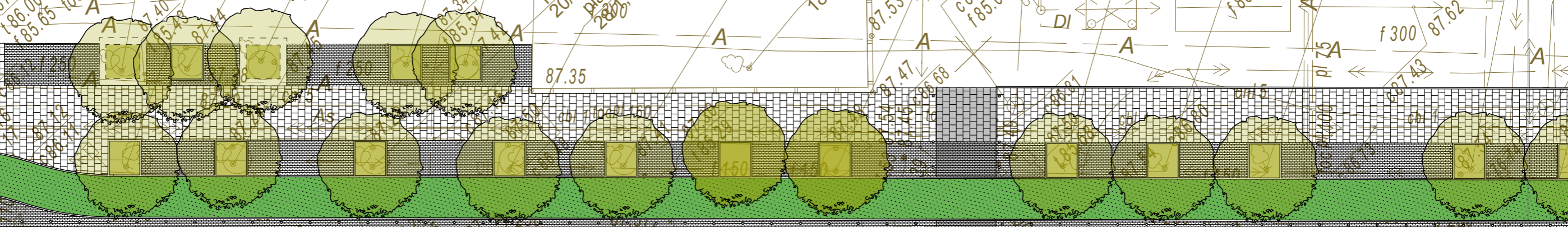
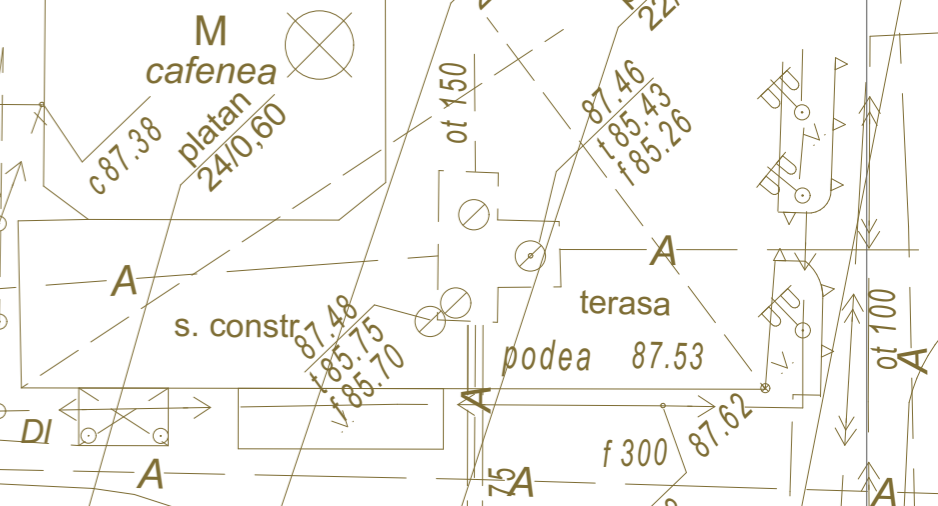
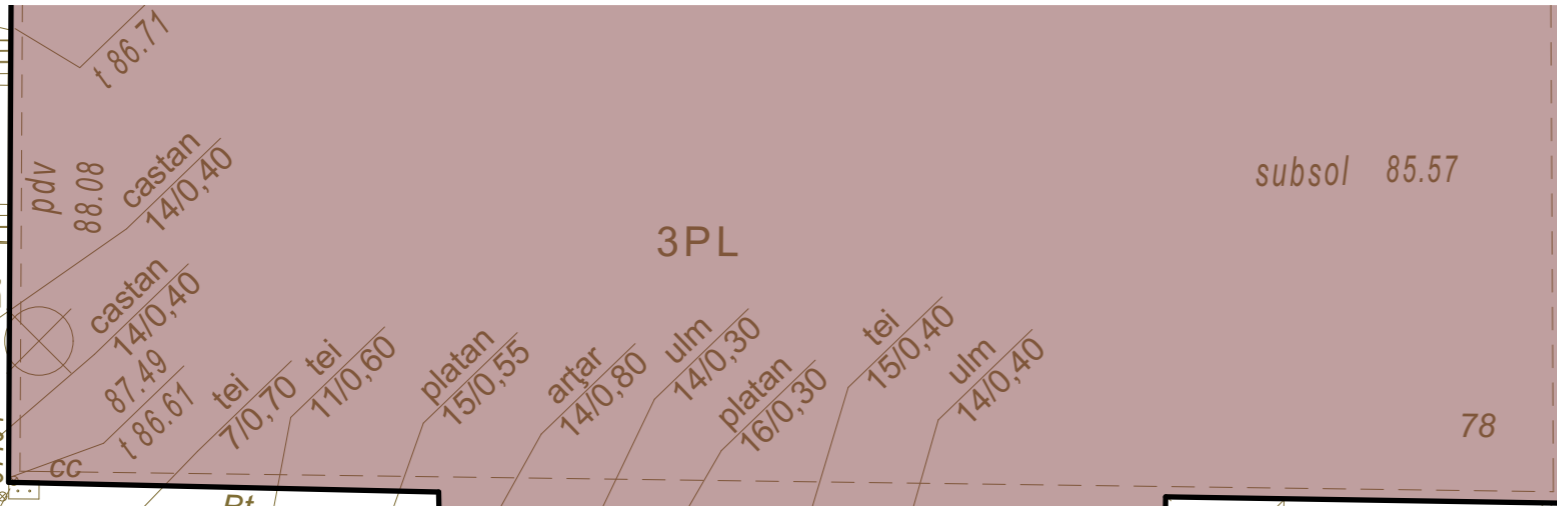
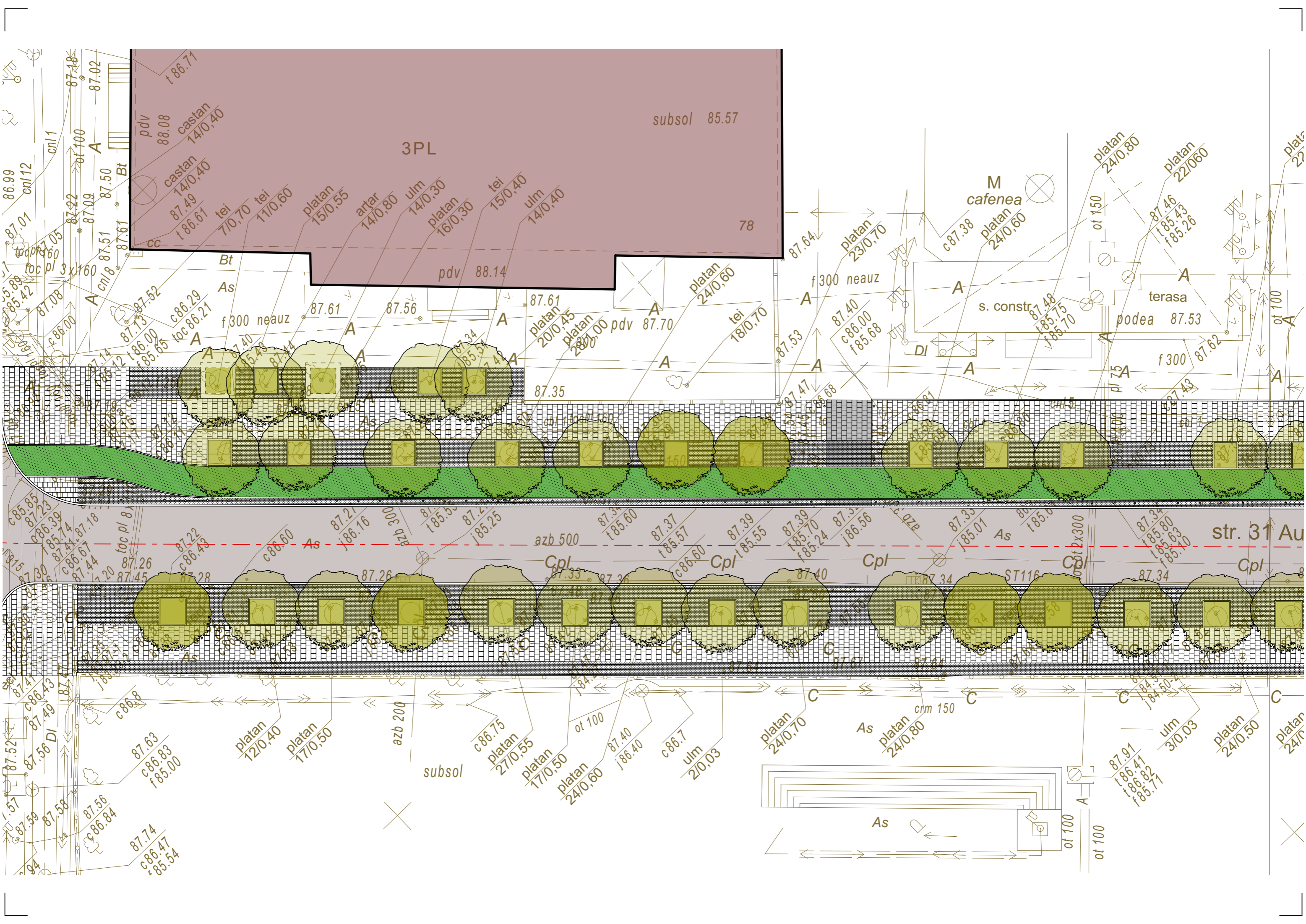
nuc 3/0.03

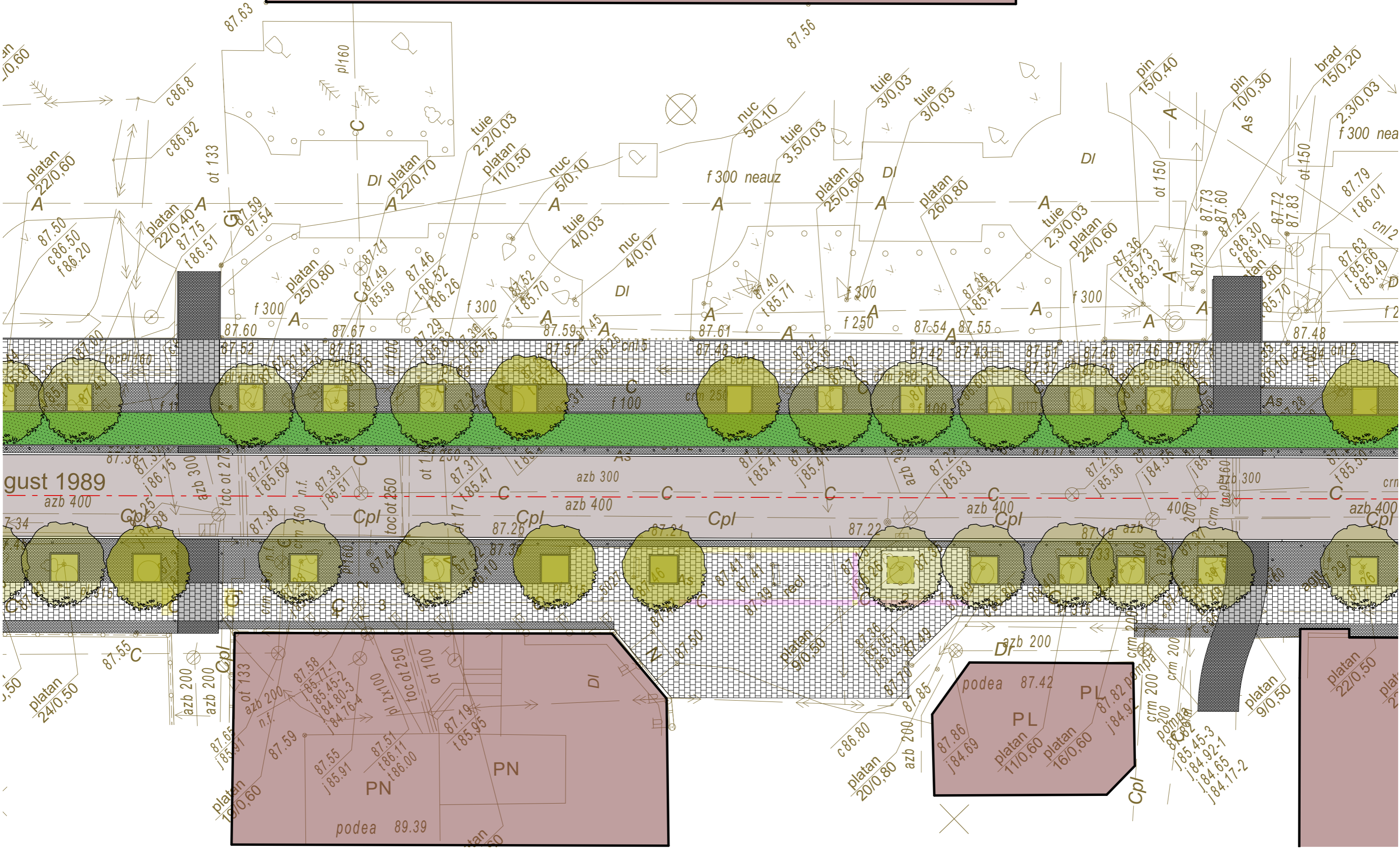
platan 26/0.80

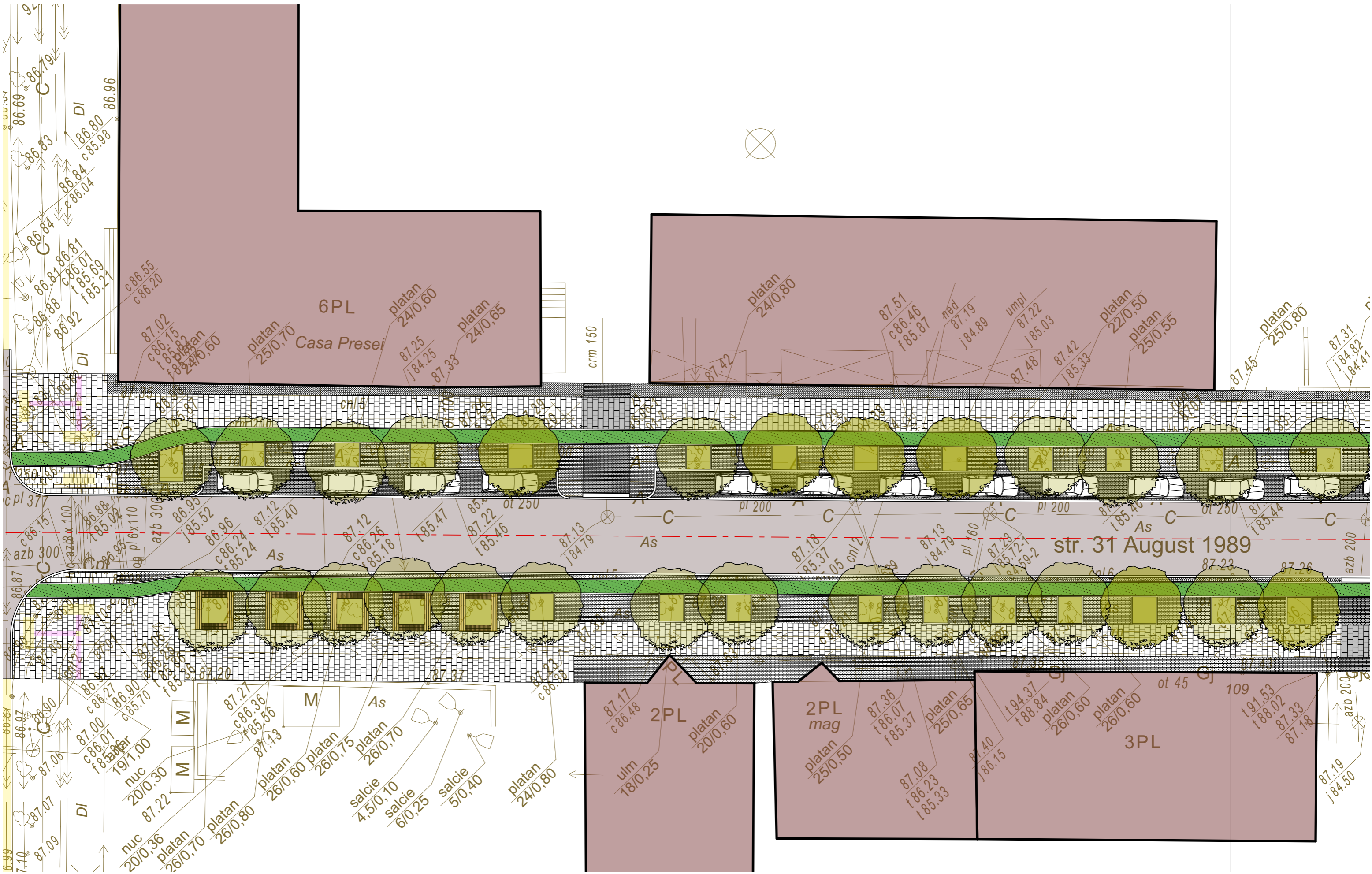
f86.5

nuc 2/0.02

nuc 2.5







6PL

Casa Presei

platan 25/0,70
platan 24/0,60
platan 24/0,65

platan 24/0,80

87.51
c86.46
f85.87

platan 22/0,50
platan 25/0,55

platan 25/0,80

str. 31 August 1989

2PL

2PL mag

3PL

ulm 18/0,25

platan 20/0,60

platan 25/0,65

salcie 4,5/0,10
salcie 6/0,25

salcie 5/0,40

platan 24/0,80

87.08
t86.23
f85.33

t94.37
t88.84

platan 26/0,60

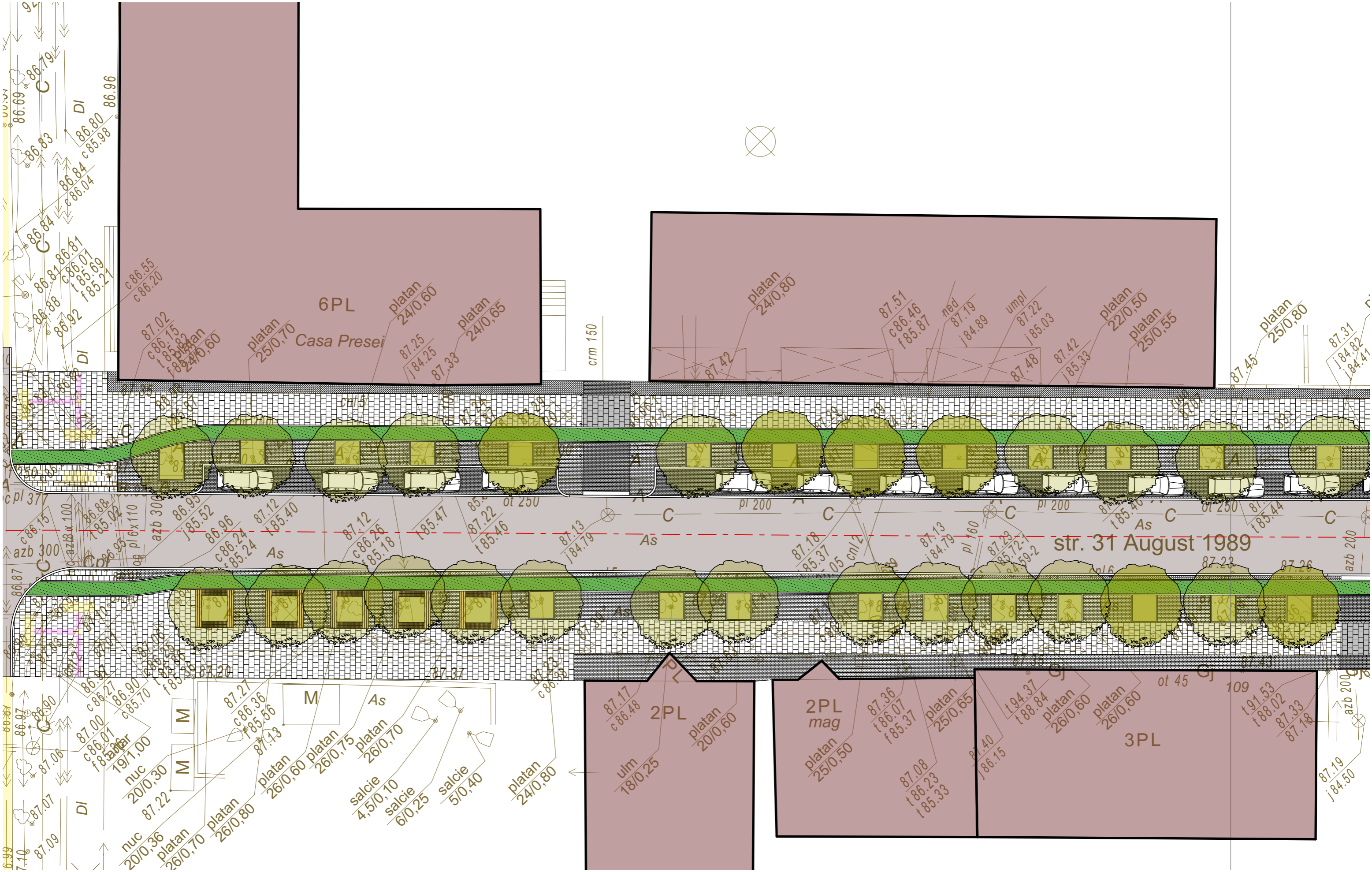
platan 26/0,60

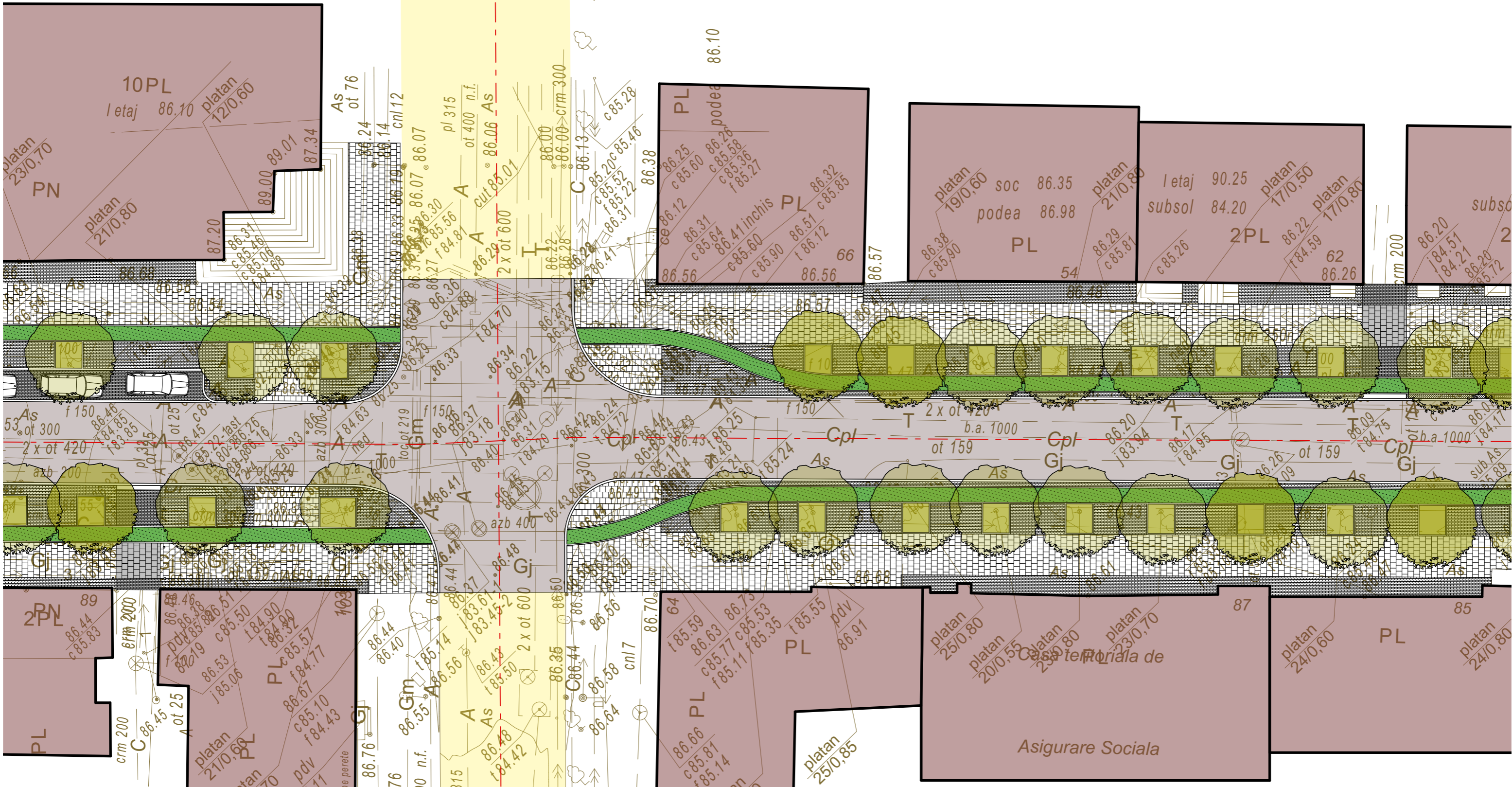
ot 45

109

t91.53
t88.02

87.33
87.18





3PL
Moldincombanc

2PL

50

2PL

50

3PL
Moldincombanc

aguti 1,8/0,18
aguti 1,8/0,17
aguti 1,8/0,18
aguti 1,7/0,20
sub pm

azb 150
Dr
2 x of 100

Dr

2 x of 100

azb 150

ot 100

crm 200

As

crm 200

2 x of 50

ulm 7/0,12

2 x of 50

platan 8/0,60

platan 9/0,20

crm 200

As

crm 200

2 x of 50

ulm 7/0,12

2 x of 50

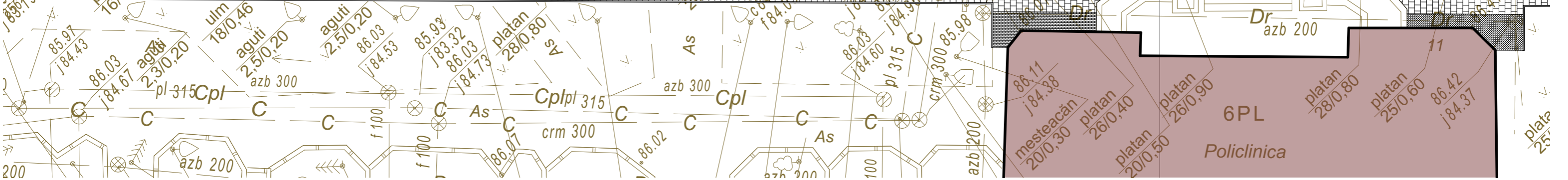
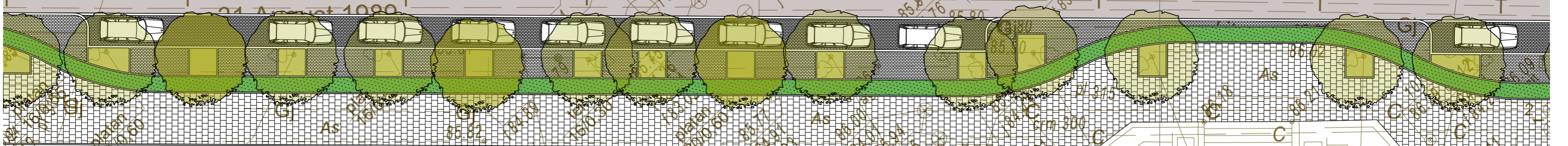
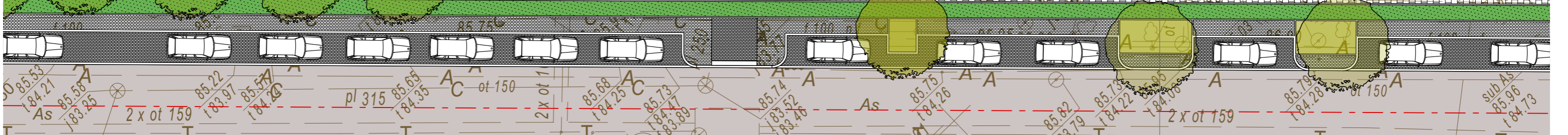
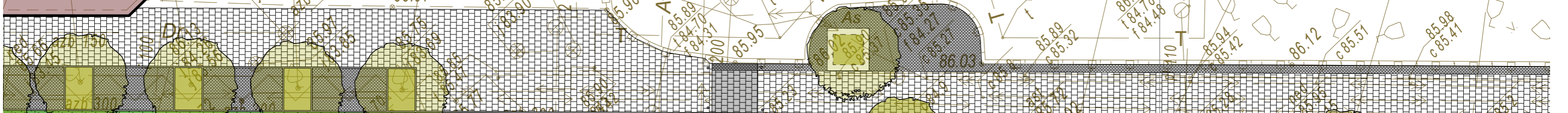
platan 8/0,60

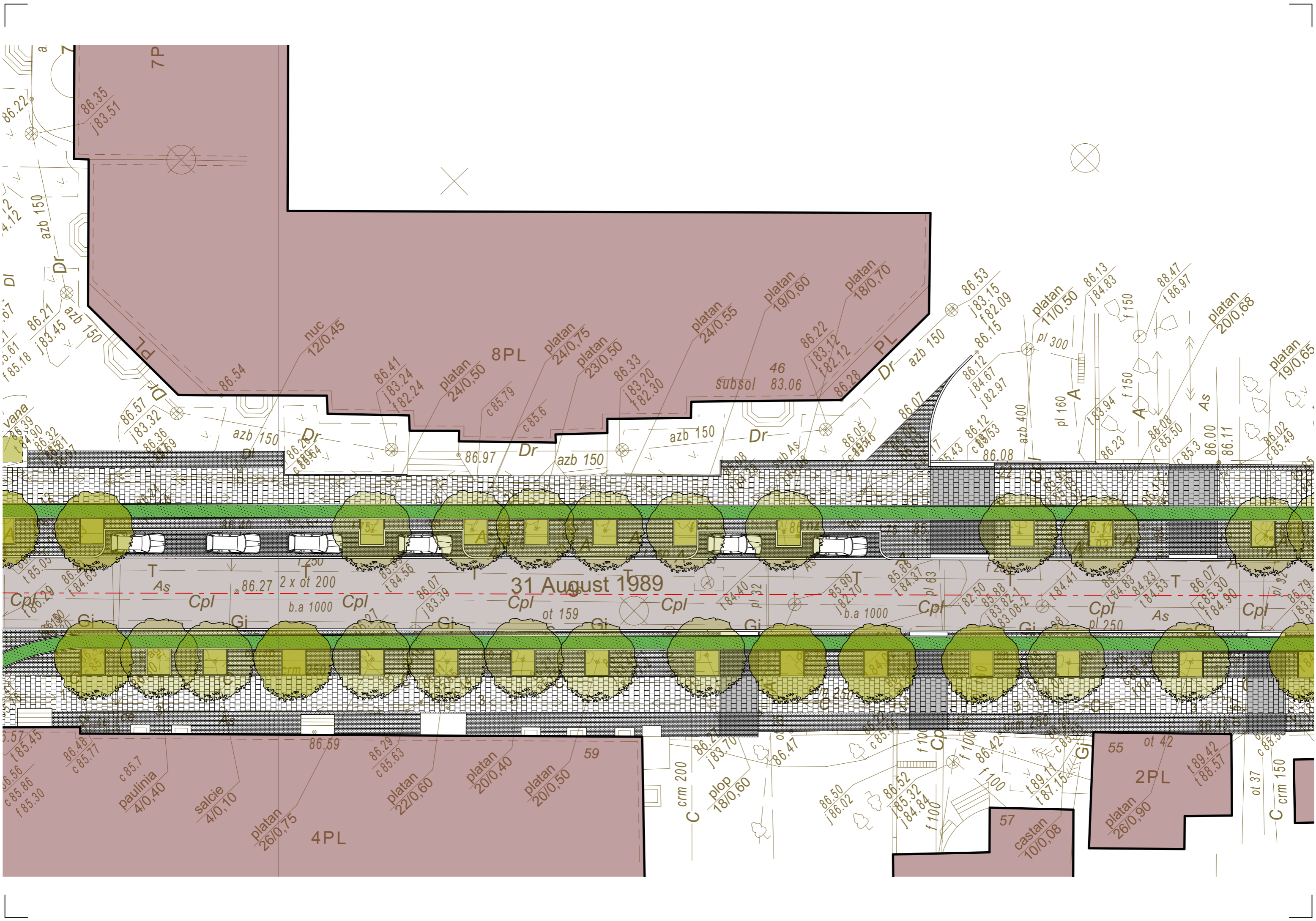
platan 9/0,20

crm 200

As

crm 200





31 August 1989

7P

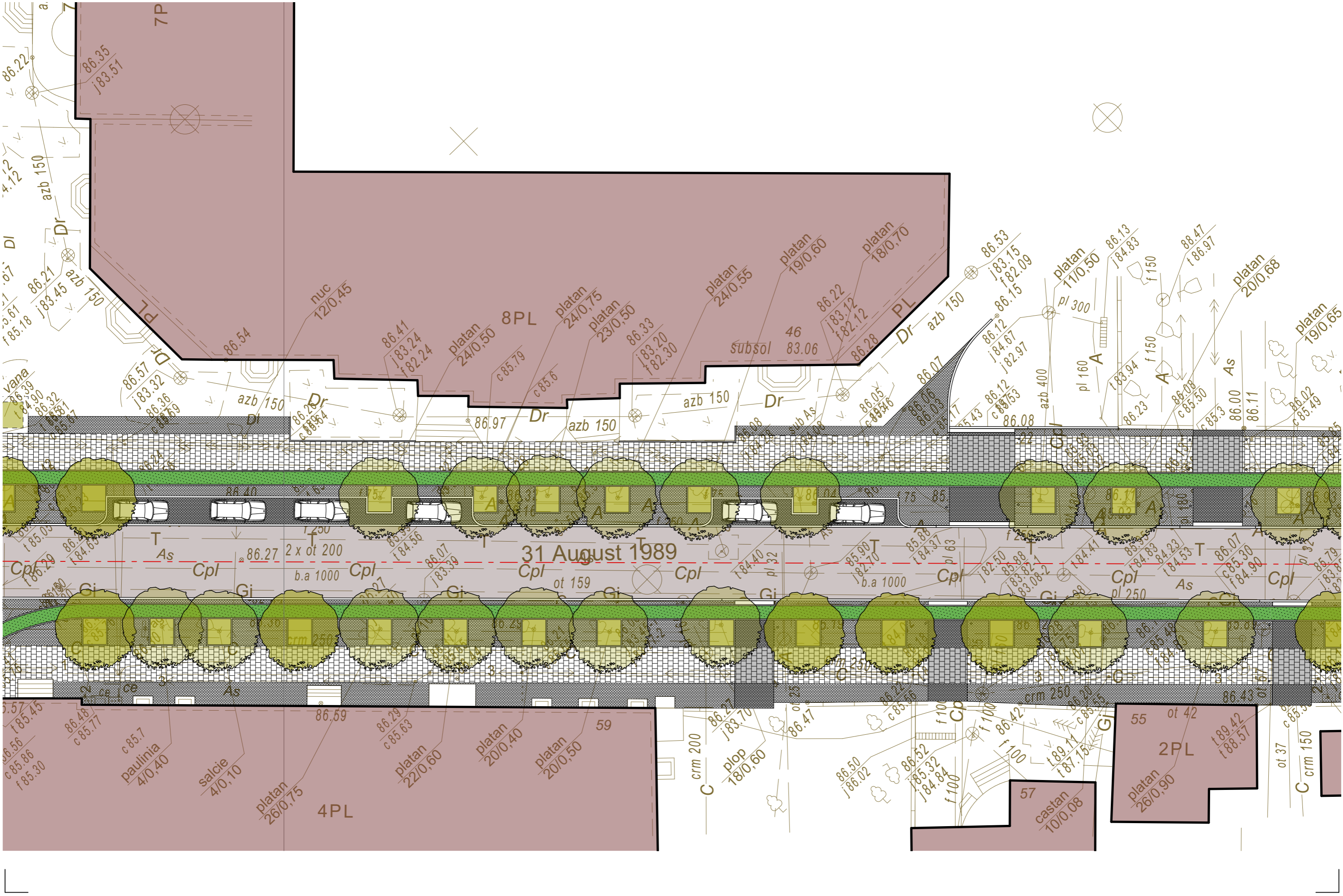
8PL

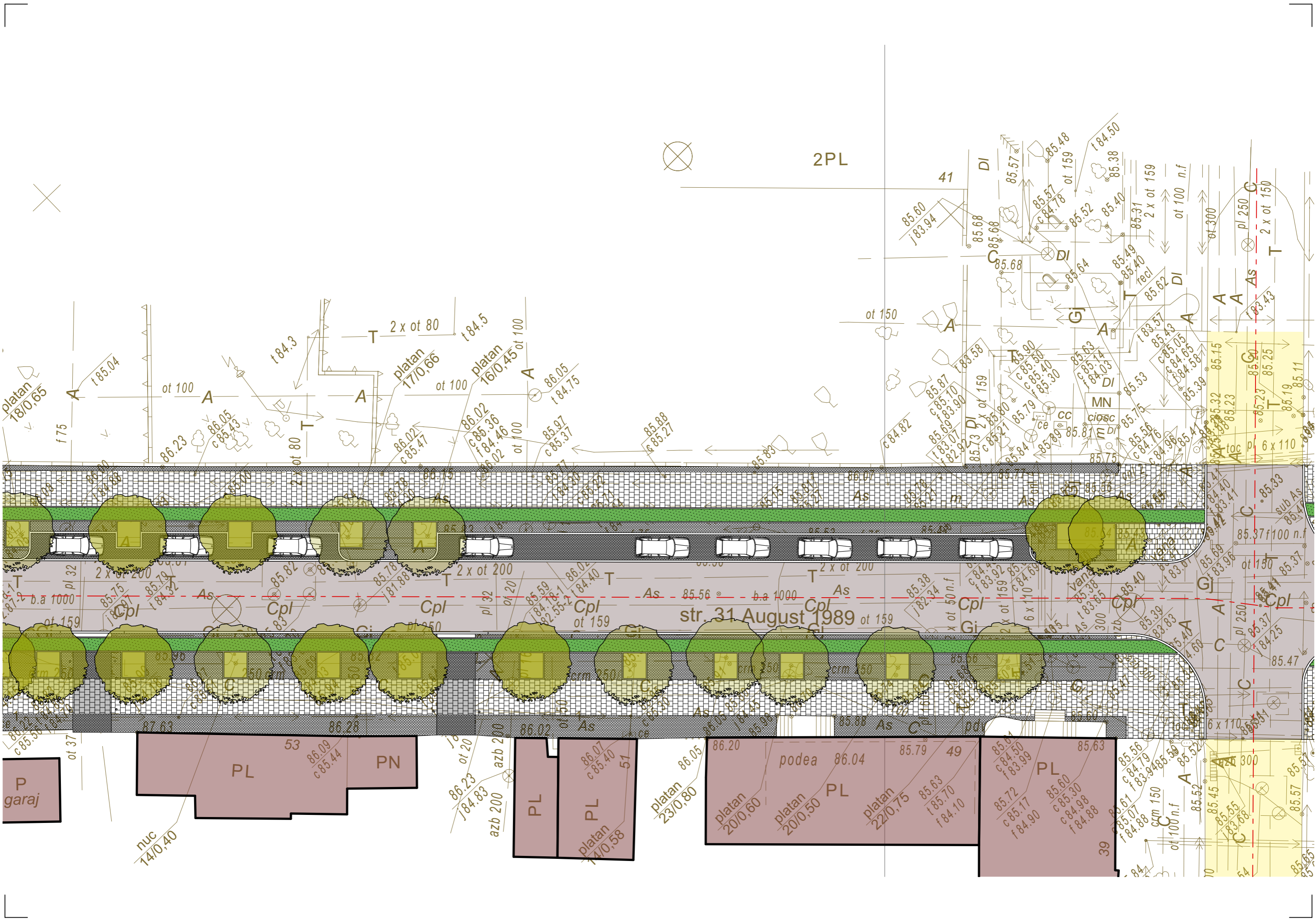
4PL

59

57

55





2PL

41

ot 150

str. 31 August 1989 ot 159

platan 1870,65

platan 1770,66

platan 1670,45

P garaj

PL

PN

PL

PL

platan 1470,58

podea

PL

platan 2070,60

platan 2070,50

platan 2270,75

PL

PL

platan 2070,60

platan 2270,75

PL

PL

platan 2070,60

platan 2270,75

PL

PL

platan 2070,60

platan 2270,75

